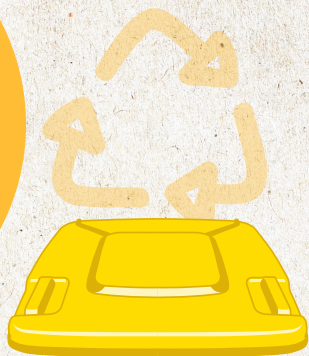


RECYCLE



Why waste it? When you can recycle it.



Paper and
Cardboard



Rigid Plastic Bottles
and Containers



Aluminium Cans
and Aerosols



Glass Bottles
and Jars



Liquid Paper
Board Cartons



Aluminium Trays
and Foil



Tins and Cans



NO Clothing
and Textiles



NO Plastic Bags



NO Garden
Materials



NO Food
or Drinks



NO Polystyrene
Foam



eastwaste.com.au

EastWaste

RECYCLE



**Please
recycle in
your
yellow
bin:**

Paper and Cardboard

- ✓ Newspapers
- ✓ Egg cartons
- ✓ Magazines
- ✓ Cardboard boxes
- ✓ Envelopes
- ✓ Milk and juice cartons

Rigid Plastic

- ✓ Drink bottles
- ✓ Ice cream and yoghurt containers
- ✓ Margarine containers
- ✓ Lids (collect inside a clear PET plastic bottle, once full place in the bin)
- ✓ Milk and juice bottles
- ✓ Takeaway food containers
- ✓ Laundry and bathroom containers

Glass

- ✓ Bottles and jars

Metals

- ✓ Tin, aluminium and steel cans
- ✓ Metal lids (collect steel lids inside a steel can, squash top of can together to contain them, then place in the bin)
- ✓ Aluminium foil trays, wrap and lids (scrunch together into a ball, then place in the bin)
- ✓ Aerosol cans (empty)

Please ensure your recyclables are empty and clean with lids removed. Please place items in loose, not in a bag!

For more information on recycling go to:

whichbin.sa.gov.au

EastWaste